

# Distributor Package

The distributor package is a grouping of our most popular products. These are the frequently ordered items that we feel stocking distributors should have access to at all times. Every product in the distributor package is in stock on our shelves and ready to ship the same day your order is placed (some restrictions apply).



## 5 Pack Grab Bars

Brey-Krause maintains "ready to ship" stock on 1-1/4" (D-77 Series) and 1-1/2" (D-78 Series) diameter straight grab bars in several lengths.

These bars utilize the round snap-on flange style and are packaged 5 bars to a box.

**D-7812-05-SS** 18" 5 pack

**D-7813-05-SS** 24" 5 pack (D-77 available)

**D-7816-05-SS** 36" 5 pack (D-77 available)

**D-7815-05-SS** 42" 5 pack (D-77 available)

**D-7817-05-SS** 48" 5 pack (D-77 available)

**D-7821-05-SS** 30" 5 pack



## Universal Frame Mirror

Our mirrors are boxed individually and can ship by virtually any means without breakage.

Convert easily to fixed or adjustable tilt mirrors thereby reducing your inventory carrying costs.

### Flat Mirror

**T-1016-20-SS** 16" Wide X 20" Mirror

**T-1016-24-SS** 16" Wide X 24" Mirror

**T-1018-24-SS** 18" Wide X 24" Mirror

**T-1018-30-SS** 18" Wide X 30" Mirror

**T-1018-36-SS** 18" Wide X 36" Mirror

**T-1024-30-SS** 24" Wide X 30" Mirror

**T-1024-36-SS** 24" Wide X 36" Mirror

### Fixed Tilt Mirror Frame (Frame only)

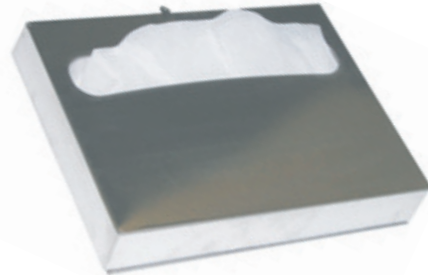
**T-1118-30-SS** 18" Wide x 30" Tall Fixed Tilt Frame

**T-1118-36-SS** 18" Wide x 36" Tall Fixed Tilt Frame

**T-1124-36-SS** 24" Wide x 36" Tall Fixed Tilt Frame

### T-1050-SS

Adjustable Tilt Mirror Brackets



## Surface Mount Seat Cover Dispenser

**C-1031-SS**

Unit is fabricated of 22 ga. stainless steel with a satin finish. It is fitted with a tumbler lock, and hinged with a stainless steel piano hinge for easy loading of contents.

11-1/2" H x 15" W x 2-1/2" Depth



## C-Fold Paper Towel Dispenser

**C-1030-SS**

Unit is fabricated of 22 ga. stainless steel with a satin finish. It is fitted with a tumbler lock, heavy duty stainless steel piano hinge, and a refill indicator slot on both sides of the cabinet.

14-1/2" H x 11" W x 4" Depth



## Sanitary Napkin Disposal

**C-1010-SS**

Unit is fabricated of 22 ga. stainless steel with a satin finish. The bottom panel is fitted with a tumbler lock and hinged with a stainless steel piano hinge for easy removal of contents. The lid is also attached with a stainless steel piano hinge.

10-1/2" H x 8-7/8" W x 3-7/8" Depth